

2023 Bassoon Ensemble Auditions

Wednesday, August 23, 2023 | 12:30 pm - 2:30 pm
Katzin Concert Hall (use the backstage entrance)

Be prepared to play the following excerpts

Composer	Composition	Movement	Other
Billy Childs	<i>Bassoon Sonata</i>	II. Largo, mm. 1-25	
Sibelius*	<i>Symphony No. 2</i>	II. Andante, ma rubato	Both parts
Revueltas*	<i>Sensemaya</i>	36 to end	1st bassoon
Rimsky-Korsakov	<i>Scheherazade</i>	Solo and Cadenzas	1st bassoon
Mozart	<i>Marriage of Figaro</i>	Overture	1st bassoon
Ravel	<i>Bolero</i>		1st bassoon

*Excerpts marked with an * are compositions programmed for the 2023-2024 season*

Audition preparation: Your bassoon audition needs to reflect your best playing, since it will influence your ensemble placement for the entire school year. Start preparing your excerpts TODAY! Be sure to listen to at least 3 recordings of each excerpt.

Contact Dr. Albie Micklich with any excerpt questions you may have: albie.micklich@asu.edu

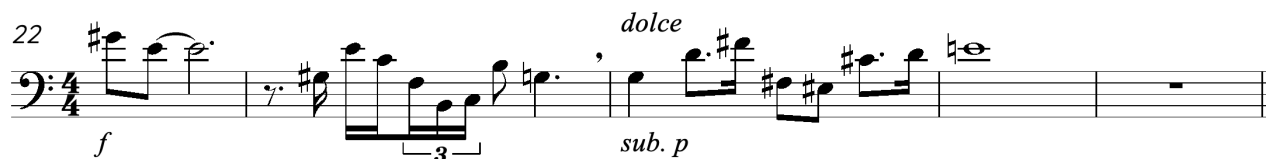
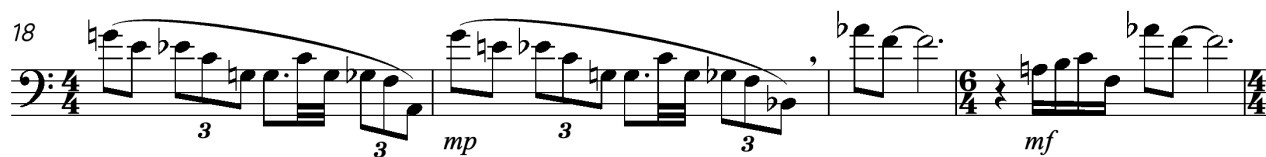
Bassoonists! There are three wonderful opportunities to be a member of Studio Orchestra (1 position) or ASU Chamber Winds (2 positions). **Bassoonists will be selected for these positions based on large ensemble auditions and student availability.**

- **ASU Chamber Winds** rehearses on Monday and Wednesday from 9:00 am - 10:15 am; students receive \$500/semester.
- **Studio Orchestra** rehearses on Wednesday and Friday from 8:30 am - 9:45 am; students receive \$500/semester.

Billy Childs, Bassoon Sonata

Movement 2

Largo ♩ = 50-52



Sibelius, Symphony No. 2 in D Major, Op. 43

II. Andante, ma rubato | Both parts

A *lugubre*

mf *dim.* *pp* *mf*

dim. *pp* *poco f* *dim. pp*

mf *dim.* *pp*

Silvestre Revueltas, Sensemaya

1st bassoon

molto cresc.

mf *dim.* *pp*

mf *dim.* *pp*

mf *dim.* *pp*

Rimsky-Korsakov, Scheherazade

Solo & Cadenzas | 1st bassoon

Andantino (♩ = 112)

capriccioso, quasi recitando

dolce ed espress.

rit. assai

Moderato, recitando

f *lunga* *p* *cresc.* *poco rit.* *a tempo*

f *lunga* *p* *stringendo e cresc.* *poco rit.*

a tempo *lunga* *f* *p* *stringendo e cresc.* *rit. molto* *ten.* **M** *sf*

Mozart, Marriage of Figaro (Overture)
1st bassoon

Presto.

pp

1

1

ff

p

ff

f

1

1

ff

f

pp

1

1

ff

p

1

2

3

4

5

6

f

Mozart (continued)



Ravel, *Bolero*
1st bassoon



Ravel, Bolero

Practice examples

The first part of Ravel's *Bolero* is comprised of nine different notes. You should start working on the actual excerpt only after you are successful playing these notes in tune and in a variety of note values and tempos.

(♩ = 72 - 80)

6

11

(♩ = 72 - 80)

9

(♩ = 72 - 80)

3

Ravel, Bolero

Solo with accompaniment

This excerpt is all about rhythmic accuracy!
The flute and snare accompaniment can be tapped or performed on bassoon.
Be sure to bring out the seven accented notes.

Tempo di Bolero, Moderato assai (♩ = 72)

Flute/
Snare

Bsn

simile

4

8

3

12

3

16